



We solve your power generation challenges



FAW

www.fawiran.com

Diesel Generator and accessories Power and control panels



Why not tell us your diesel
generator requirements?
And we will come up with a
solution!



Our customers get
reliable power and flexible
servicing, from a company
with the expertise and
experience to offer
engineering excellence and
state-of-the-art engines.
That is what lies behind
Rabin Energy Pazh brand



Do You Know, Who We are?

In today's technology-dependent world, energy is no longer a luxury but a necessity. But power is one thing you won't have to worry about. Why? Because Rabin Energy Pazh company has a reputation for providing high quality, fuel efficient diesel generators that keep noise levels to a minimum and deliver excellent performance. Since the establishment in the mid of 1360, the company is involved in supplying and trading a wide array of Power Generator Sets, Silent Generator Sets, Generator Spare Parts, Generator Lubricants, Diesel Generator Sets and ... and has played an important role in supplying efficient, reliable and strong diesel engines for the commercial or industrial applications. Hence, over the 3 past decades, the company has gained recognition and trust from among its clients and when you choose Rabin Energy Pazh brand, you will get a truly world class quality. That is why we are passionate about delivering excellent products and services that exceed our customers' expectations.

Rabin Energy Pazh company, as a diesel generators specialist and the No.1 leading independent Iranian diesel generator provider company, assembles and supplies diesel generators from 25kVA to 2500kVA and guarantees best prices. Our diesel generators range in the mid to larger sizes, have been designed and developed with the ability to handle large single step-load demands, with short recovery times, to ensure optimum generator performance.

Diesel generators we provide in Iran, have proved themselves all over the world and are widely used in the Europe, Asia, Middle East, Latin America and African countries. From the very small to the very large, our diesel generators deliver first class performance and reliability underpinned by the Rabin Energy Pazh guarantee. We work closely with you to understand your challenges and requirements for parts, aftercare and maintenance, so we can significantly reduce your down time – enabling you to maximize the return on your investment. Please remember that our reputation is based on trust and reliability – we will keep your engine running wherever you are in Iran. So, if you need to power a small tent or a major power plant, get the job done with customized Rabin Energy Pazh solutions, service & support. you can be sure these generators will never stop.



About FAWDE

Rabin Energy Pazh Company has cooperated with and obtained agency for one of the leading Chinese companies to enhance the quality of the Company, products and achieve its expansion goals. In this regard, the grant of sales and after-sales agency from FAWDE, a Chinese enterprise being a national and internationally recognized brand in the field of manufacturing Diesel Generators, is to be mentioned. We, Rabin Energy Pazh Co., are honored to be able to increase the number of our Generators buyers and assume responsibility towards their trust, through presenting the best after-sales services and increasing effort to keep them satisfied and trustful.

With more than 70 years' history

With over 70 years of experience in manufacturing diesel engines, FAWDE (First Automotive Works Diesel Engines) is the biggest engine manufacturer in China. This company is an exclusively-invested enterprise subordinated to China FAW Group Corporation. Established in 1943, and after seven decades of development, the factory now covers an area of 800,000 square meters, with over 3,500 employees, total assets of RMB6.35 billion, and brand intangible assets of RMB10.229 billion. Presently, it possesses four plant areas, including two large engine bases, one engine remanufacturing base, and one modified vehicle research base, and has formed a production system with world-leading equipment, domestic leading management and industry leading quality, with an annual production capacity of 600,000 diesel engines and 15,000 modified vehicles.

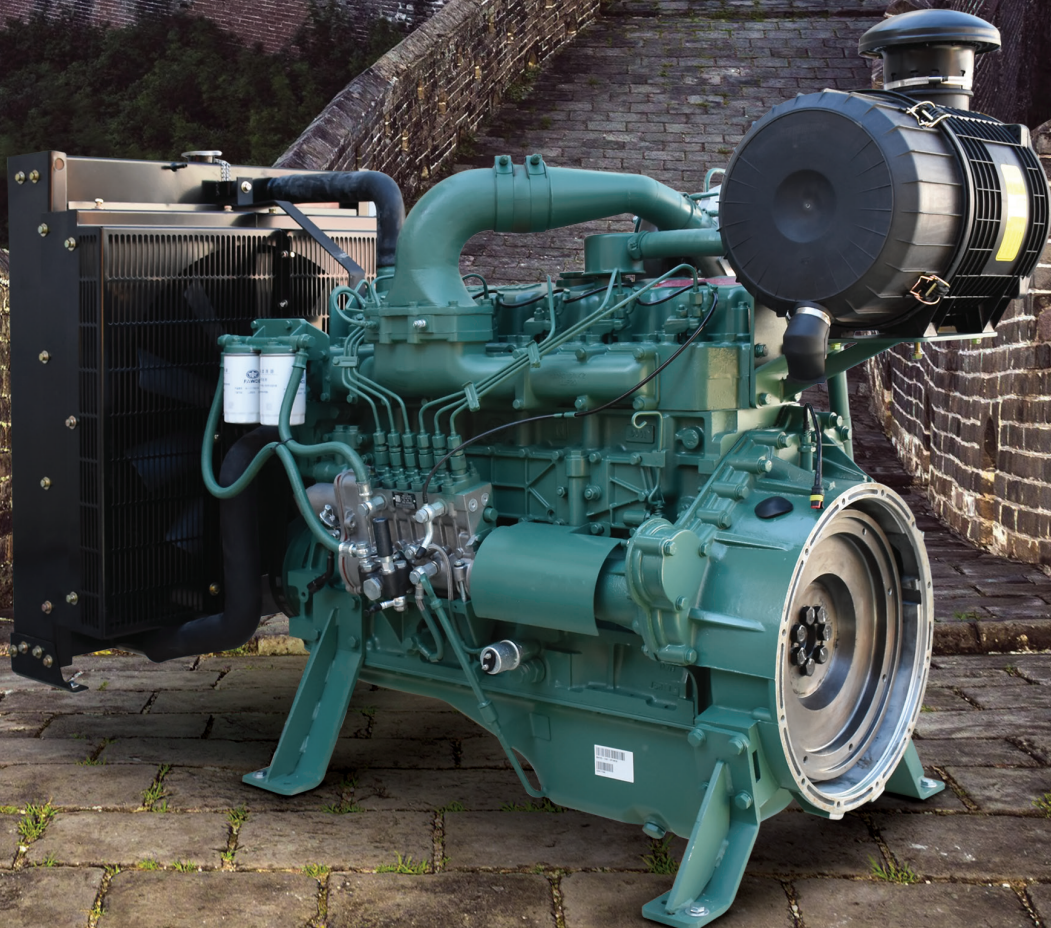
Already partner of major automotive companies, today FAWDE faces the European market with a complete offer of engines for generator sets (gensets). With more than 7

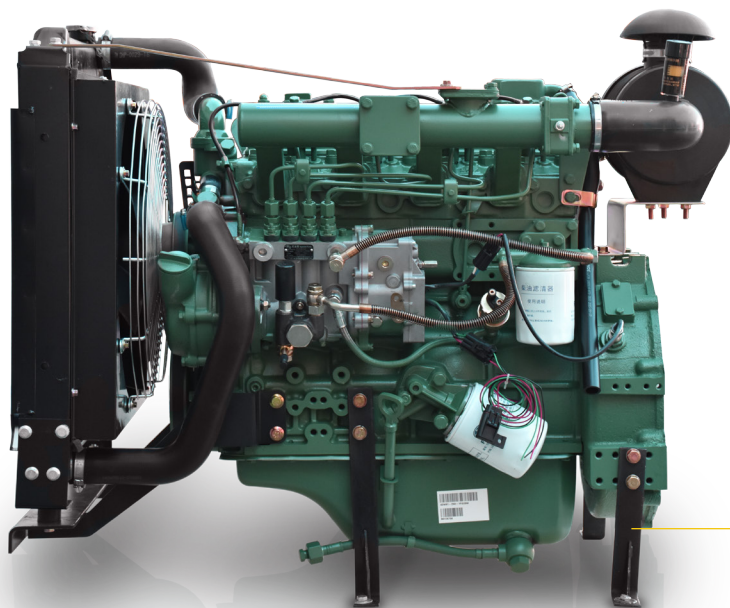
decades of experience in producing diesel engines, we can provide them with lower emission, higher reliability, lower noise, and lower consumption, as well as lower price.

Our high product quality is guaranteed by our producing facilities, which include an internationally advanced CNC processing department, FMS (Flexible Manufacturing System), and advanced testing equipment introduced from America, Japan and Germany. We supply diesel engines to customers from all over the world, including South America, Middle East, and Africa, as well as many other parts of the world. Our company is located in Wuxi city, where we have convenient sea transportation, river shipping, and railway and highway transportation; therefore, we are able to offer our quality products at low prices. We look forward to expanding our business to even more international markets. If you are in need of any type of diesel engine product, please contact with Rabin Energy Pazh Company in Tehran as our exclusive agent in Iran.

With more than 70 years' history,
FAWDE is very experienced in diesel
engine/generator industry and has
created many NO.1 in China:

wide range power
low fuel consumption
low noise
high reliability
Emission can meet Euro II to Euro V
Exported to more than 40 countries and areas





4DW Engine

4DW 81-23 D
4DW 91-29 D
4DW 92-35 D
4DW 93-42 D

→ 4DW Engine Technical Data

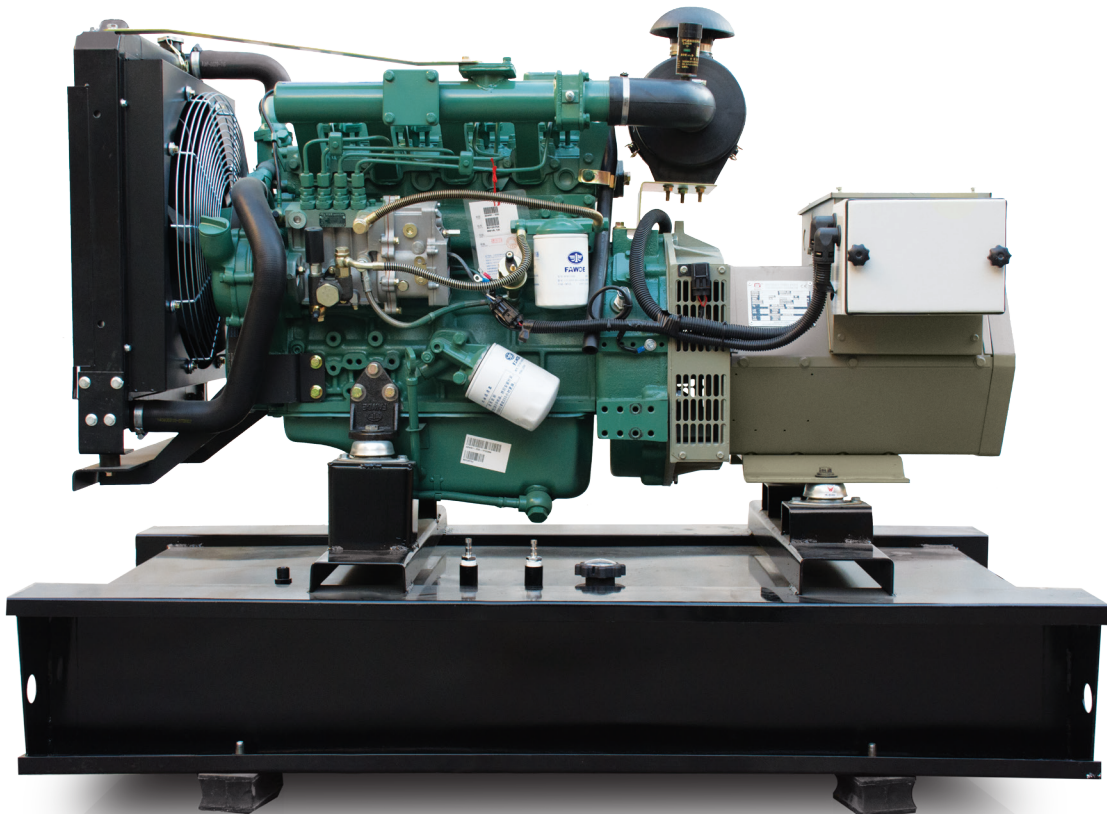
Engine model	4DW 81-23 D	4DW 91-29 D	4DW 92-35 D	4DW 93-42 D
Type	In Line , 4 Cylinder , 4 Stroke			
Air Intake Type	Natural	Natural	Turbocharged	Turbo & Intercool
Cooling Mode	Water Cooling	Water Cooling	Water Cooling	Water Cooling
Governor Mode	Electronic	Electronic	Electronic	Electronic
Bore x Stroke (mm)	85 x 100	90 x 100	90 x 100	90 x 100
Compression Ratio	17:1	17:1	17:1	17:1
Rated Speed (rpm)	1500	1500	1500	1500
Displacement (Liter)	2.27	2.54	2.54	2.54
Prime Power (KW)	17	21	26	31
Standby Power (KW)	19	23	29	34
Oil Consumption (L/h)	0.05	0.05	0.04	0.04
Steady state Speed Regulation (%)	≤5	≤5	≤5	≤5
Oil Capacity including filter (Liter)	7.8	8	8	8
Emission Compliant	Stage II	Stage II	Stage II	Stage II
Flywheel Hosing Type and Size	SAE 4	SAE 4	SAE 4	SAE 4
Dry Weight of Base (Kg)	220	220	240	240
Dry Weight of Gen Pac (Kg)	240	240	260	280
L x W x H (mm)				
Overall Dimension (Base)	750 x 555 x 680	750 x 555 x 680	750 x 600 x 735	750 x 600 x 735
Overall Dimension (Gen Pac)	920 x 610 x 760	920 x 610 x 760	1120 x 810 x 760	1120 x 810 x 760
° 27C Air Consumption (m³/min)	1.4	1.7	2.1	2.4
Heat Rejection Of Exhaust (Kw)	17.2	17.4	20.6	23.1
Exhaust Gas Temp after turbine (°C)	550	450	450	450
Exhaust Gas Flow (m³/min)	4.2	4.6	5.9	6.7
Heat Rejection From Engine (Kw)	1.1	1.3	1.6	1.9
Heat Rejection of Coolant (Kw)	11	13.7	16.9	17.1
Alternator	14 V (500W)	14 V (500W)	14 V (500W)	14 V (500W)
Starter Motor	12 V (3.5KW)	12 V (3.5KW)	12 V (3.5KW)	12 V (3.5KW)



You need a generator set to fit very specific criteria. And that is why Rabin Energy Pazh company, gives you the convenience of finding generator sets based on real-world applications and specs. Simply tell us what you need and we will get down to work! Perhaps you need an engine to operate in a harsh environment or under strenuous conditions. Maybe it will only ever be used in an emergency. But whether running every day or once a year, you can count on us to create the innovative, efficient and reliable solutions whatever your application. Our comprehensive, reliable solutions have helped our customers increase their productivity and performance – in every detail.

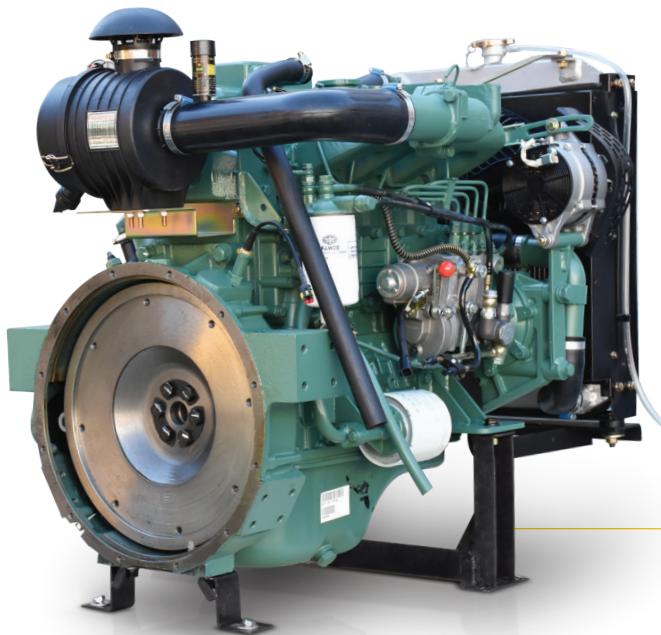
25-40 KVA

Genset Model	Engine Model	Alternator Model							Dimension			Weight (Kg)
			Prime (KVA)/40C	Standby (KVA)/40C	Standby (KVA)/27C	Circuit Breaker (Amp)	Fuel Tank (L)	Consumption %75(L/h)	Length (mm)	Width (mm)	Height (mm)	
REP25	4DW81 - 23D	TWG II 184F	25	27.5	30	32	145	4.5	1500	700	1150	500
REP30	4DW91 - 29D	TWG II 184FC	27.5	30	32.5	32	145	4.5	1500	700	1150	550
REP35	4DW92 - 35D	TWG II 184H	37.5	40	41.3	40	145	6	1700	700	1150	590
REP40	4DW93 - 42D	TWG II 184J	42.5	45	47.5	50	145	6.8	1700	700	1150	630



25-40 KVA





4DX Engine

4DX 21-45 D
4DX 22-50 D
4DX 23-65 D

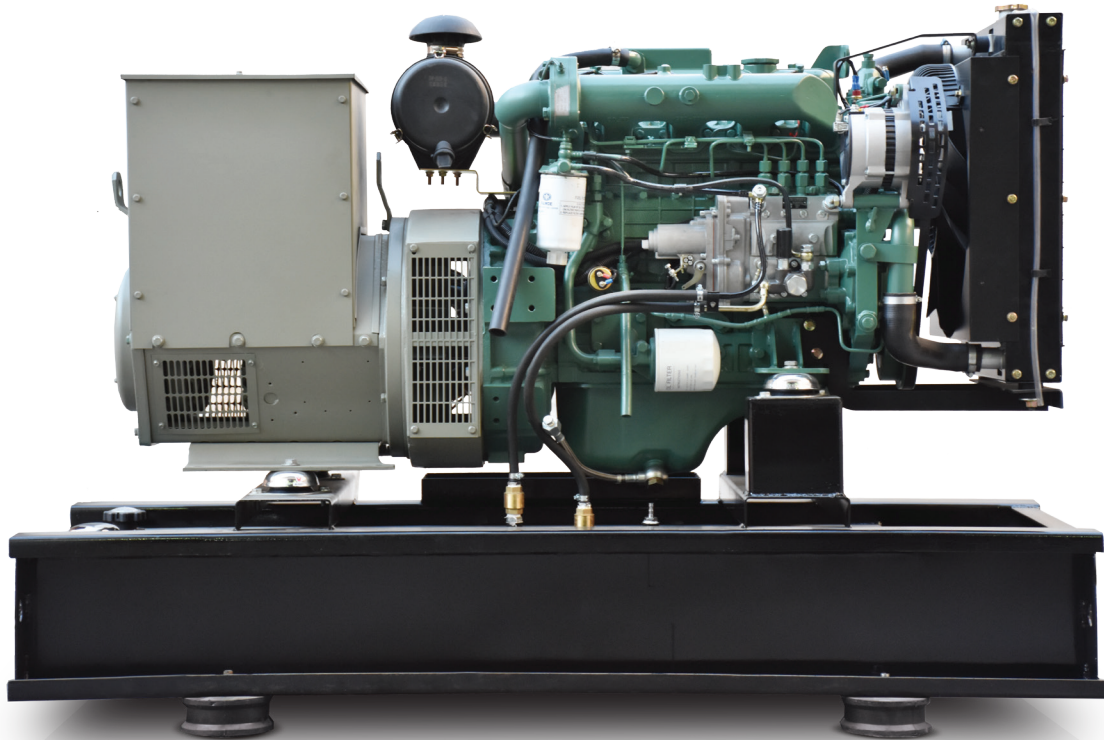
→ 4DX Engine Technical Data

Engine model	4DX 21-45 D	4DX 22-50 D	4DX 23-65 D
Type	In Line , 4 Cylinder , 4 Stroke		
Air Intake Type	Natural	Turbocharged	Turbo & Intercooling
Cooling Mode	Water Cooling	Water Cooling	Water Cooling
Governor Mode	Electronic	Electronic	Electronic
Bore x Stroke (mm)	102 x 118	102 x 118	102 x 118
Compression Ratio	17:1	17:1	17:1
Rated Speed (rpm)	1500	1500	1500
Displacement (Liter)	3.86	3.86	3.86
Prime Power (KW)	33	37	48
Standby Power (KW)	36	41	53
Oil Consumption (L/h)	0.06	0.05	0.05
Steady state Speed Regulation (%)	≤5	≤5	≤5
Oil Capacity including filter (Liter)	12.5	13	13
Emission Compliant	Stage II	Stage II	Stage II
Flywheel Hosing Type and Size	SAE 3	SAE 3	SAE 3
Dry Weight of Base (Kg)	350	380	380
Dry Weight of Gen Pac (Kg)	375	405	410
L x W x H (mm)			
Overall Dimension (Base)	810 x 680 x 800	810 x 700 x 850	810 x 700 x 850
Overall Dimension (Gen Pac)	1155 x 680 x 835	1155 x 680 x 835	1480 x 705 x 900
°27C Air Consumption (m³/min)	2.6	3.2	3.9
Heat Rejection Of Exhaust (Kw)	34.5	36.4	43.5
Exhaust Gas Temp after turbine (°C)	580	480	480
Exhaust Gas Flow (m³/min)	8.3	8.4	10.4
Heat Rejection From Engine (Kw)	2	2.6	3.3
Heat Rejection of Coolant (Kw)	21.5	24.1	29
Alternator	28 V (35A)	28 V (35A)	28 V (35A)
Starter Motor	24 V (4.5KW)	24 V (4.5KW)	24 V (4.5KW)



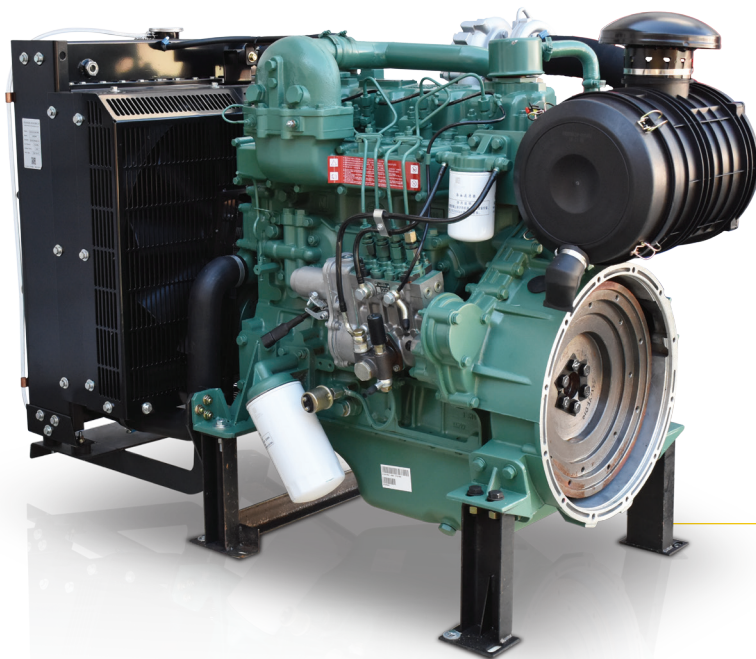
45-72 KVA

45-72 KVA									Dimension			
Genset Model	Engine Model	Alternator Model	Prime (KVA)/40C	Standby (KVA)/40C	Standby (KVA)/27C	Circuit Breaker (Amp)	Fuel Tank (L)	Consumption %75(L/h)	Length (mm)	Width (mm)	Height (mm)	Weight (Kg)
REP45	4DX21 - 45D	TWG II 184J	42.5	45	47.5	50	170	7.8	1800	700	1250	800
REP50	4DX22 - 50D	TWG II 224C	50	52.5	55	63	170	8.2	1800	900	1300	880
REP72	4DX23 - 65D	TWG II 224E	72.5	77.5	80	100	170	11	2000	900	1300	920



45-72 KVA





4DF Engine

CA4110/125Z - 09D
CA4DF2-12D

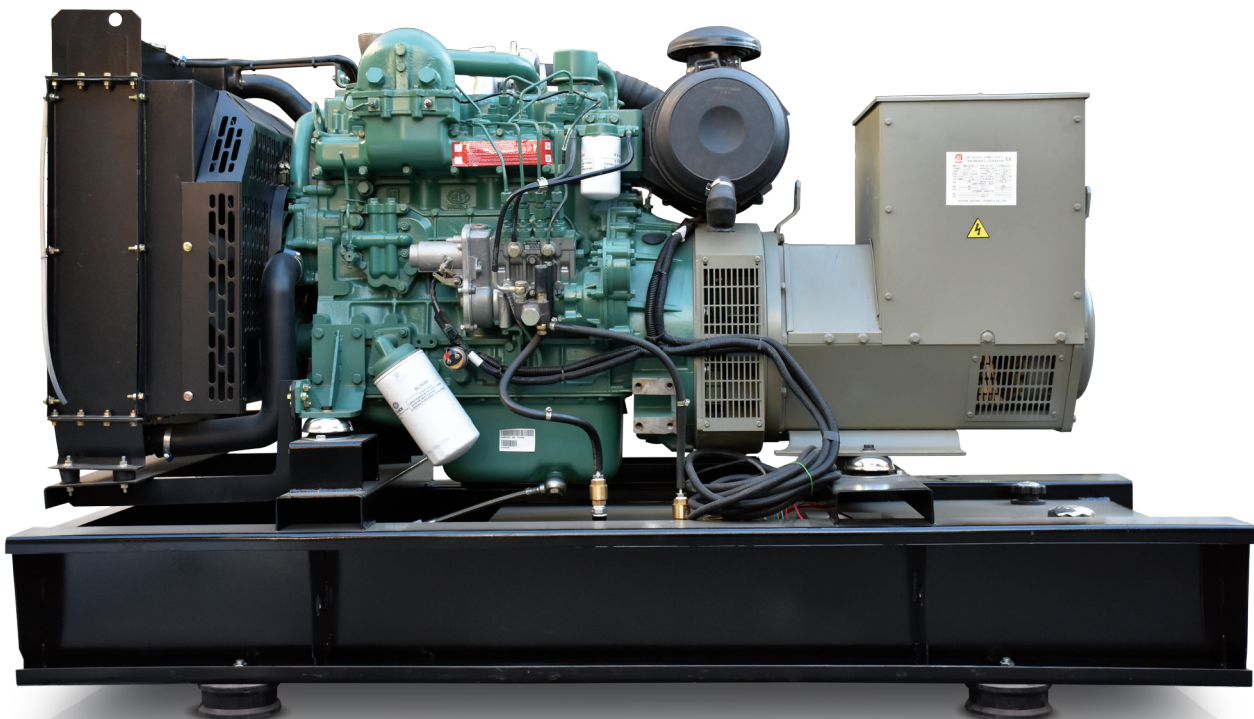
→ 4DF Engine Technical Data

Engine model	CA4110/125Z - 09D	CA4DF2 - 12D
Type	In Line , 4 Cylinder , 4 Stroke	
Air Intake Type	Turbocharged	Turbo & Intercooling
Cooling Mode	Water Cooling	Water Cooling
Governor Mode	Electronic	Electronic
Bore x Stroke (mm)	110 x 125	110 x 125
Compression Ratio	17:1	17:1
Rated Speed (rpm)	1500	1500
Displacement (Liter)	4.75	4.75
Prime Power (KW)	65	84
Standby Power (KW)	72	92
Oil Consumption (L/h)	0.06	0.05
Steady state Speed Regulation (%)	≤3	≤3
Oil Capacity including filter (Liter)	16	16
Emission Compliant	Stage II	Stage II
Flywheel Hosing Type and Size	SAE 3	SAE 3
Dry Weight of Base (Kg)	470	480
Dry Weight of Gen Pac (Kg)	540	550
		L x W x H (mm)
Overall Dimension (Base)	970 x 630 x 930	970 x 630 x 930
Overall Dimension (Gen Pac)	1300 x 700 x 938	1300 x 938 860
°27C Air Consumption (m³/min)	5	6
Heat Rejection Of Exhaust (Kw)	53	64
Exhaust Gas Temp after turbine (°C)	450	450
Exhaust Gas Flow (m³/min)	14	17
Heat Rejection From Engine (Kw)	10	12
Heat Rejection of Coolant (Kw)	40	46
Alternator	28 V (45A)	28 V (45A)
Starter Motor	24 V (5KW)	24 V (5KW)



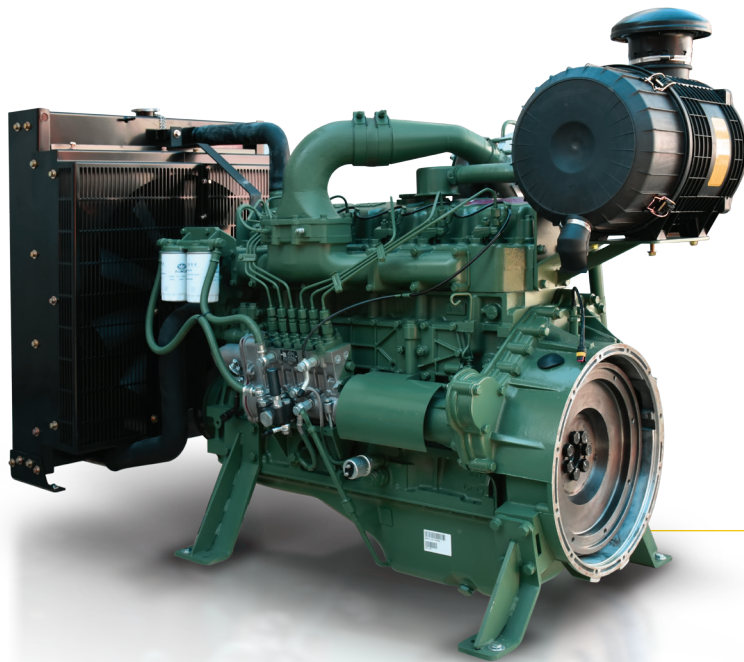
90-120 KVA

Genset Model	Engine Model	Alternator Model							Dimension			Weight (kg)
			Prime (KVA)/40C	Standby (KVA)/40C	Standby (KVA)/27C	Circuit Breaker (Amp)	Fuel Tank (L)	Consumption %75(L/h)	Length (mm)	Width (mm)	Height (mm)	
REP90	CA4DF1 - 09D	TWG II 224F	85	87.5	94	125	190	14.5	2200	900	1400	1070
REP120	CA4DF2 - 12D	TWG II 274C	117.5	127.5	131	160	230	18.5	2300	1100	1400	1130



90-120 KVA





6DF Engine

CA6DF2D - 14D
CA6DF2 - 17D
CA6DF2 - 19D

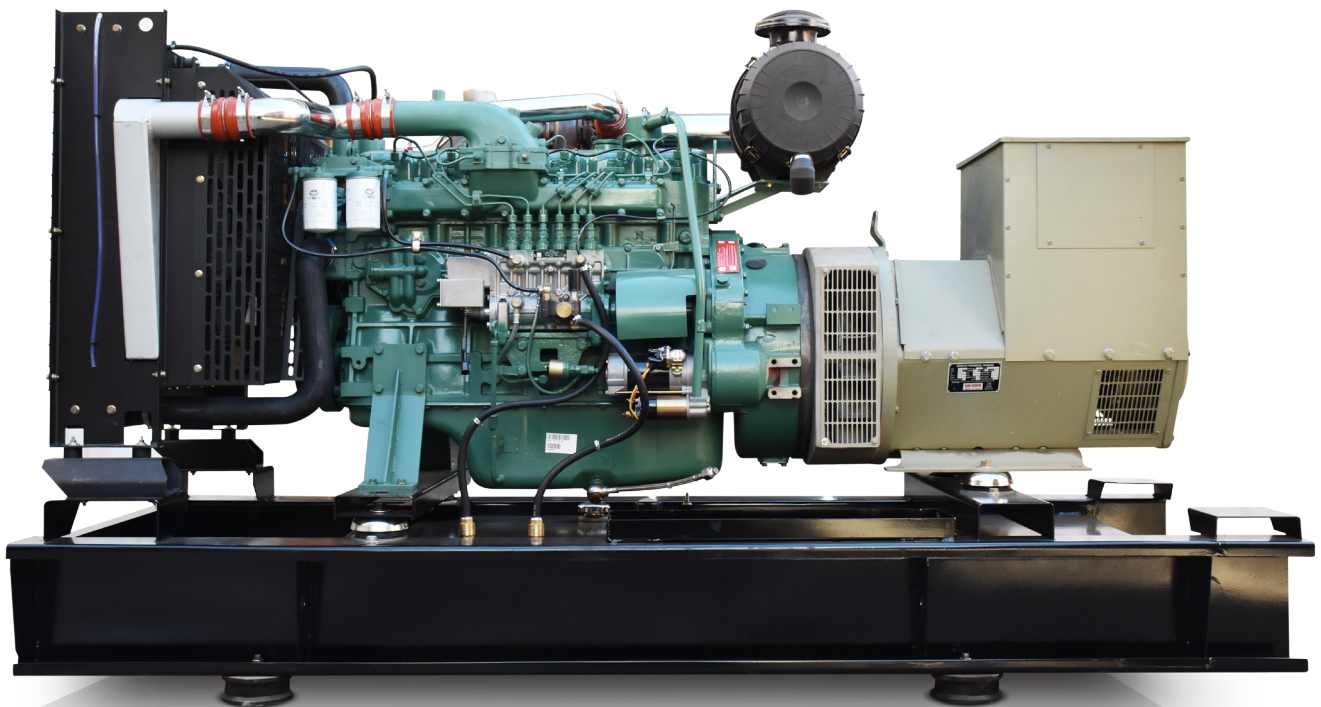
→ 6DF Engine Technical Data

Engine model	CA6DF2D - 14D	CA6DF2 - 17D	CA6DF2 - 19D
Type	In Line , 6 Cylinder , 4 Stroke		
Air Intake Type	Turbocharged	Turbocharged	Turbo & Intercooling
Cooling Mode	Water Cooling	Water Cooling	Water Cooling
Governor Mode	Electronic	Electronic	Electronic
Bore x Stroke (mm)	110 X 115	110 X 125	110 X 125
Compression Ratio	17:1	17:1	17:1
Rated Speed (rpm)	1500	1500	1500
Displacement (Liter)	6.55	7.13	7.13
Prime Power (KW)	96	125	140
Standby Power (KW)	105	138	154
Oil Consumption (L/h)	0.08	0.08	0.06
Steady state Speed Regulation (%)	≤3	≤3	≤3
Oil Capacity including filter (Liter)	20	20	23
Emission Compliant	Stage II	Stage II	Stage II
Flywheel Hosing Type and Size	SAE 3	SAE 2	SAE 2
Dry Weight of Base (Kg)	650	680	680
Dry Weight of Gen Pac (Kg)	850	880	880
L x W x H (mm)			
Overall Dimension (Base)	1200 X 680 X 1030	1320 X 680 X 1100	1320 X 680 X 1100
Overall Dimension (Gen Pac)	1655 X 805 X 1310	1655 X 805 X 1310	1655 X 805 X 1310
°27C Air Consumption (m³/min)	7	9	12
Heat Rejection Of Exhaust (Kw)	77	102	120
Exhaust Gas Temp after turbine (°C)	460	470	470
Exhaust Gas Flow (m³/min)	19	25	30
Heat Rejection From Engine (Kw)	14	18	21
Heat Rejection of Coolant (Kw)	60	77	81
Alternator	28 V (45A)	28 V (55A)	28 V (55A)
Starter Motor	24 V (6KW)	24 V (6.2KW)	24 V (6.2KW)



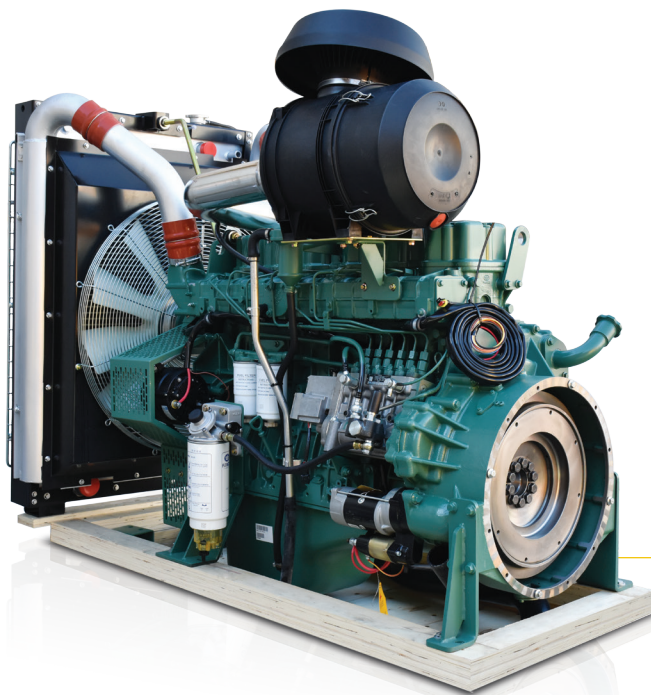
140-190 KVA

140-190 KVA									Dimension			
Genset Model	Engine Model	Alternator Model	Prime (KVA)/40C	Standby (KVA)/40C	Standby (KVA)/27C	Circuit Breaker (Amp)	Fuel Tank (L)	Consumption %75(L/h)	Length (mm)	Width (mm)	Height (mm)	Weight (Kg)
REP140	CA6DF2D - 14D	TWG II 274D	140	145	150	200	250	21.2	2700	1100	1450	1500
REP170	CA6DF2 - 17D	TWG II 274E	160	170	175	250	250	25	2700	1100	1520	1600
REP190	CA6DF2 - 19D	TWG II 274F	181	187.5	200	250	250	28.5	2700	1100	1550	1680



140-190 KVA





6DL Engine

CA6DL1 - 24D
CA6DL2 - 27D
CA6DL2 - 30D

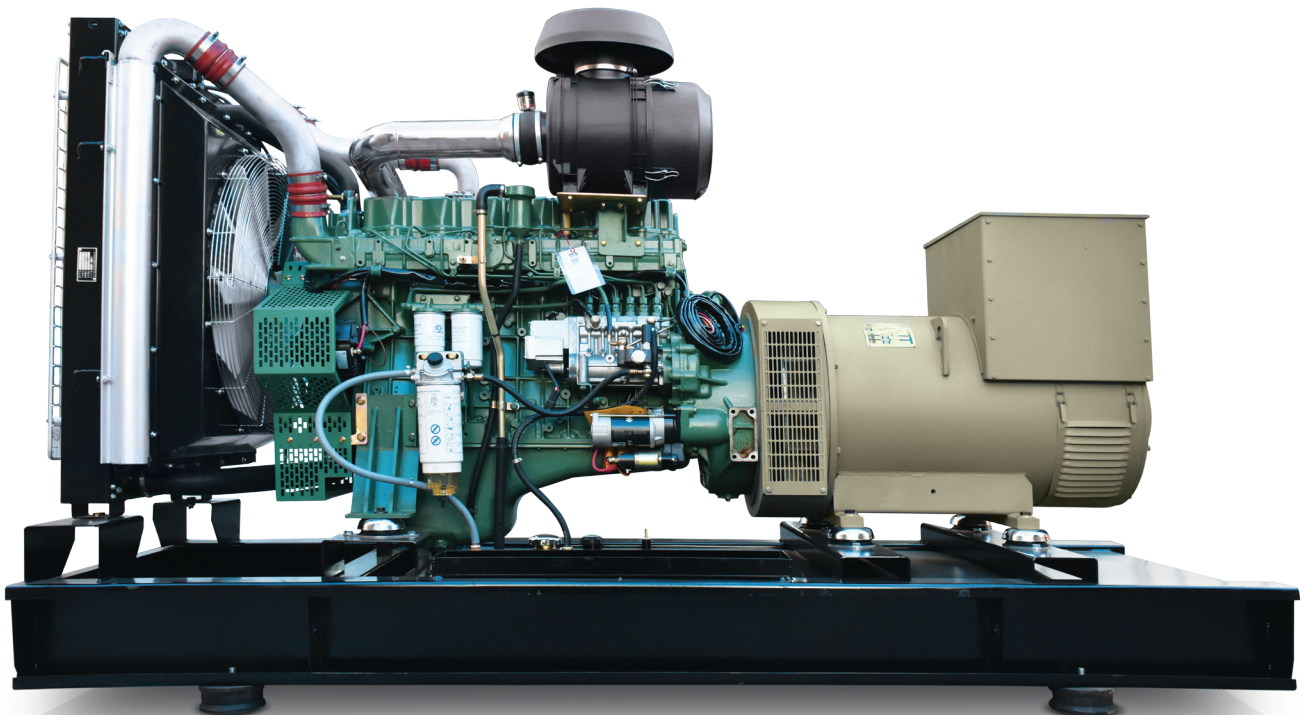
→ 6DL Engine Technical Data

Engine model	CA6DL1 - 24D	CA6DL2 - 27D	CA6DL2 - 30D
Type	In Line , 6 Cylinder , 4 Stroke		
Air Intake Type	Turbo & Intercooling	Turbo & Intercooling	Turbo & Intercooling
Cooling Mode	Water Cooling	Water Cooling	Water Cooling
Governor Mode	Electronic	Electronic	Electronic
Bore x Stroke (mm)	110 X 135	112 X 145	112 X 145
Compression Ratio	17.5:1	17.5:1	17.5:1
Rated Speed (rpm)	1500	1500	1500
Displacement (Liter)	7.7	8.57	9
Prime Power (KW)	176	205	240
Standby Power (KW)	194	226	280
Oil Consumption (L/h)	0.06	0.06	0.06
Steady state Speed Regulation (%)	≤3	≤3	≤3
Oil Capacity including filter (Liter)	28	30	30
Emission Compliant	Stage II	Stage II	Stage II
Flywheel Hosing Type and Size	SAE 2	SAE 2	SAE 2
Dry Weight of Base (Kg)	780	800	820
Dry Weight of Gen Pac (Kg)	1110	1131	1150
L x W x H (mm)			
Overall Dimension (Base)	1345 X 750 X 1150	1345 X 750 X 1150	1345 X 750 X 1150
Overall Dimension (Gen Pac)	1698 X 948 X 1490	1698 X 948 X 1490	1698 X 948 X 1490
°27C Air Consumption (m³/min)	12	14	15
Heat Rejection Of Exhaust (Kw)	126	140	160
Exhaust Gas Temp after turbine (°C)	460	470	470
Exhaust Gas Flow (m³/min)	34	40	45
Heat Rejection From Engine (Kw)	10.8	12	13.2
Heat Rejection of Coolant (Kw)	86	96	106
Alternator	28 V (75A)	28 V (75A)	28 V (75A)
Starter Motor	24 V (6KW)	24 V (6.2KW)	24 V (6.2KW)



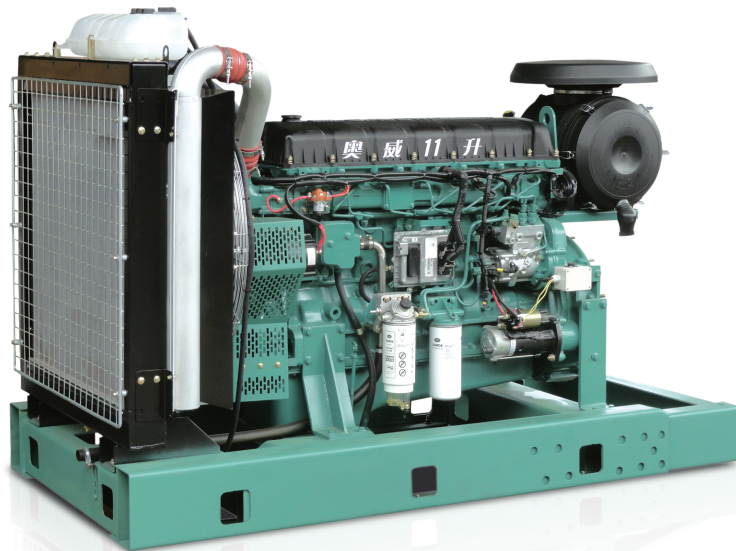
240-350 KVA

240-350 KVA									Dimension			
Genset Model	Engine Model	Alternator Model	Prime (KVA)/40C	Standby (KVA)/40C	Standby (KVA)/27C	Circuit Breaker (Amp)	Fuel Tank (L)	Consumption %75(L/h)	Length (mm)	Width (mm)	Height (mm)	Weight (Kg)
REP240	CA6DL1 - 24D	TWG II 274H	225	237.5	250	300	280	35.2	2800	1070	1900	2020
REP270	CA6DL2 - 27D	TWG II 314BC	250	270	275	400	350	39.5	3000	1170	1900	2220
REP350	CA6DL2 - 30D	TWG II 314DC	325	350	375	500	350	43	3000	1170	1900	2350



240-350 KVA





6DM Engine

CA6DM2J - 39D
CA6DM2J - 41D

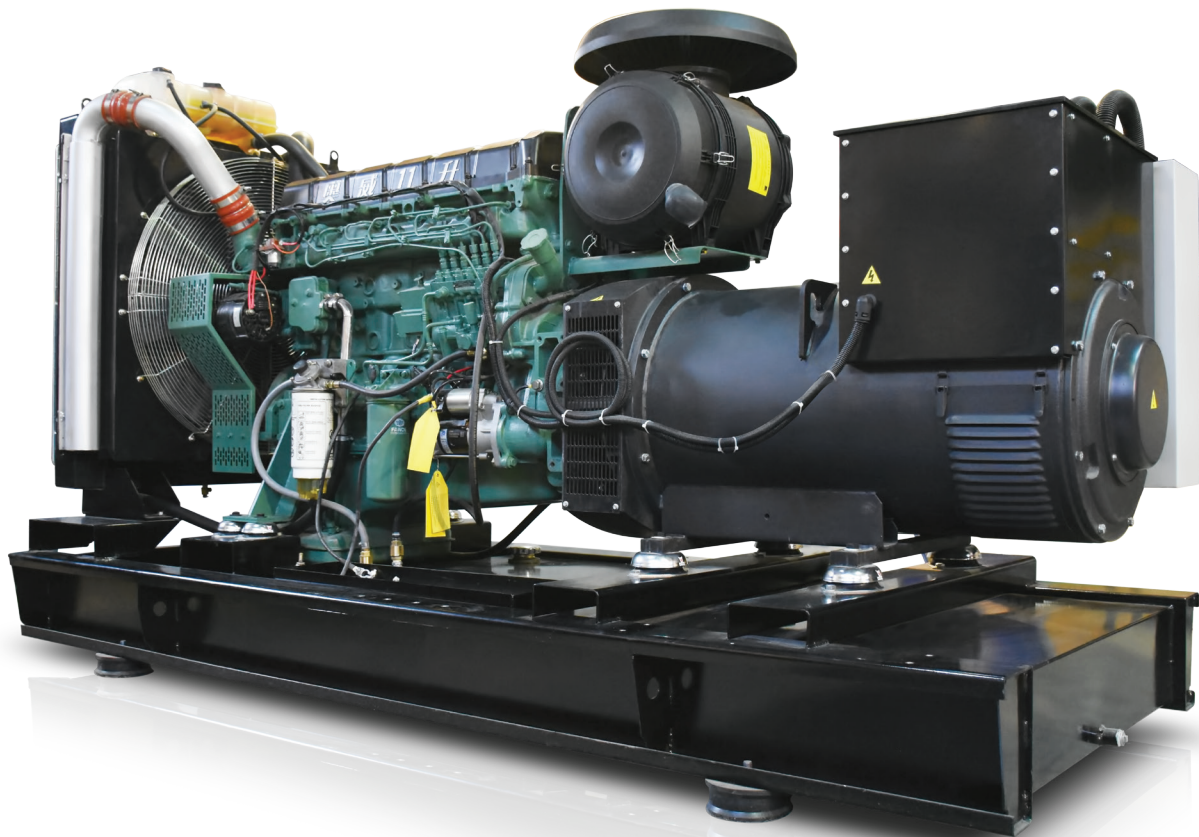
→ 6DM Engine Technical Data

Engine model	CA6DM2J - 39D	CA6DM2J - 41D
Type	In Line , 6 Cylinder , 4 Stroke	
Air Intake Type	Turbocharged	Turbo & Intercooling
Cooling Mode	Water Cooling	Water Cooling
Governor Mode	Electronic	Electronic
Bore x Stroke (mm)	110 x 125	110 x 125
Compression Ratio	17:1	17:1
Rated Speed (rpm)	1500	1500
Displacement (Liter)	4.75	4.75
Prime Power (KW)	65	84
Standby Power (KW)	72	92
Oil Consumption (L/h)	0.06	0.05
Steady state Speed Regulation (%)	≤3	≤3
Oil Capacity including filter (Liter)	16	16
Emission Compliant	Stage II	Stage II
Flywheel Hosing Type and Size	SAE 3	SAE 3
Dry Weight of Base (Kg)	470	480
Dry Weight of Gen Pac (Kg)	540	550
		L x W x H (mm)
Overall Dimension (Base)	970 x 630 x 930	970 x 630 x 930
Overall Dimension (Gen Pac)	1300 x 700 x 938	1300 x 938 860
°27C Air Consumption (m³/min)	5	6
Heat Rejection Of Exhaust (Kw)	53	64
Exhaust Gas Temp after turbine (°C)	450	450
Exhaust Gas Flow (m³/min)	14	17
Heat Rejection From Engine (Kw)	10	12
Heat Rejection of Coolant (Kw)	40	46
Alternator	28 V (45A)	28 V (45A)
Starter Motor	24 V (5KW)	24 V (5KW)



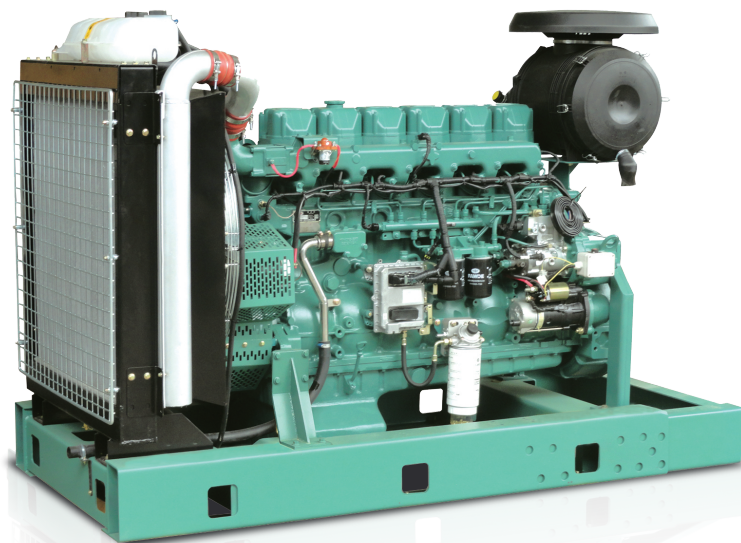
400-450 KVA

Genset Model	Engine Model	Alternator Model							Dimension			
			Prime (KVA)/40C	Standby (KVA)/40C	Standby (KVA)/27C	Circuit Breaker (Amp)	Fuel Tank (L)	Consumption %75(L/h)	Length (mm)	Width (mm)	Height (mm)	Weight (Kg)
REP400	CA6DM2J - 39D	TWG II 314EC	375	400	425	500	400	57	3000	1250	1950	2850
REP450	CA6DM2J - 41D	TWG II 314E	400	425	450	600	400	61	3000	1250	1950	2870



400-450 KVA





6DN Engine

CA6DN1J- 45D

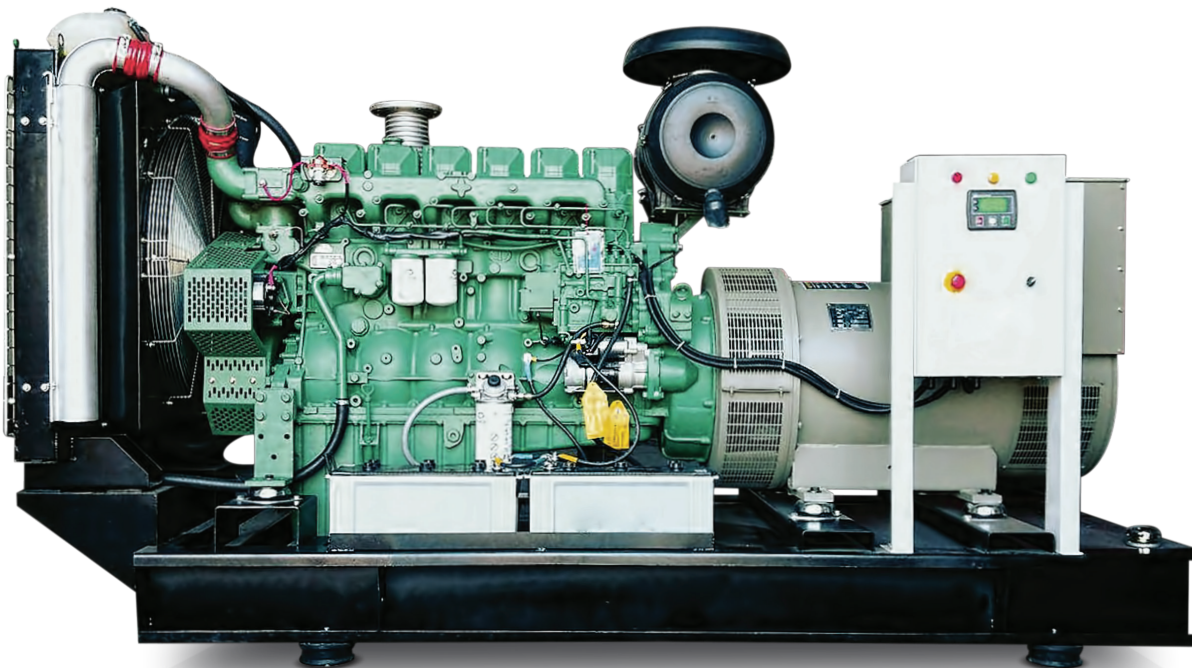
→ 6DN Engine Technical Data

Engine model	CA6DN1J - 45D
Type	In Line , 6 Cylinder , 4 Stroke
Air Intake Type	Turbo & Intercooling
Cooling Mode	Water Cooling
Governor Mode	Electronic
Bore x Stroke (mm)	131 X 155
Compression Ratio	18:1
Rated Speed (rpm)	1500
Displacement (Liter)	13
Prime Power (KW)	345
Standby Power (KW)	380
Oil Consumption (L/h)	0.06
Steady state Speed Regulation (%)	≤3
Oil Capacity including filter (Liter)	42
Emission Compliant	Stage II
Flywheel Hosing Type and Size	SAE 1
Dry Weight of Base (Kg)	1250
Dry Weight of Gen Pac (Kg)	1495
	L x W x H (mm)
Overall Dimension (Gen Pac)	2300 X 1120 X 1580
° 27C Air Consumption (m³/min)	22.7
Heat Rejection Of Exhaust (Kw)	240
Exhaust Gas Temp after turbine (°C)	470
Exhaust Gas Flow (m³/min)	64.5
Heat Rejection From Engine (Kw)	20
Heat Rejection of Coolant (Kw)	149
Alternator	28 V (75A)
Starter Motor	24 V (7.5KW)



500 KVA

500 KVA									Dimension			
Genset Model	Engine Model	Alternator Model	Prime (KVA)/40C	Standby (KVA)/40C	Standby (KVA)/27C	Circuit Breaker (Amp)	Fuel Tank (L)	Consumption %75(L/h)	Length (mm)	Width (mm)	Height (mm)	Weight (Kg)
REP500	CA6DN1J - 45D	TWG II 354C	500	525	550	700	450	67	3300	1300	2000	3200



500 KVA



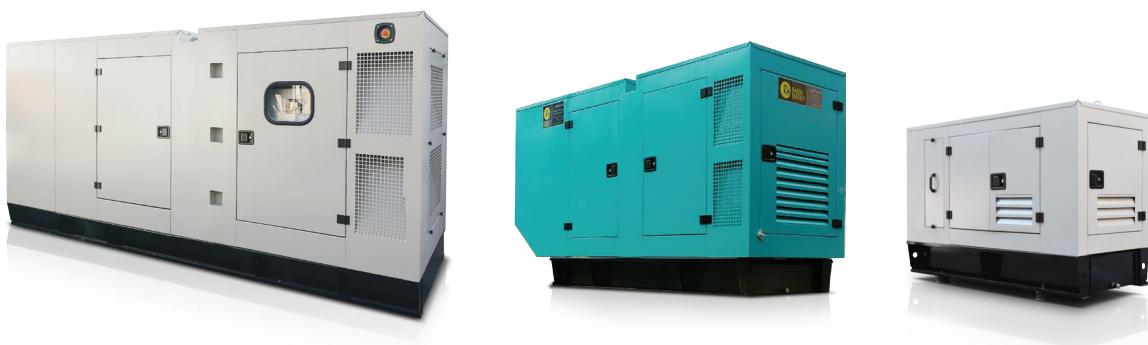


Canopy & Skid base frame

We have marked a distinct position in the market by providing a high quality Canopy and skid base frames. These canopies and skid base frames are manufactured, using high grade raw material and sophisticated technology, keeping in mind international quality standards. We are also the manufacturers of Portable Canopy for industrial usages. These portable canopies are the most convenient way of outdoor promotion. Precision engineered by our experienced professionals, these are available in various specifications for commercial and residential usage.

General Specifications of the Different Canopies Manufactured by Rabin Energy Pazh

- ➔ Good exterior design for outdoor use
 - ➔ Resistant against rain and dust
 - ➔ All equipment is protected from outside interference.
 - ➔ It ensures the safety of the equipment during transport.
 - ➔ Long life, Light Weighted, Less maintenance, Durable finish standards
 - ➔ Applying emergency shut down keys on the outer side of the silent canopy.
 - ➔ Use of rubber bands round the canopy door to reduce the emitting noise and dust.
 - ➔ Considering proper ventilation pertinent to the weather condition of the installation area.
 - ➔ Installing suitable big doors around the two sides of diesel generator canopy for easy access.
 - ➔ Reducing diesel generator noise between 50 to 80 percent for different sizes of the machines.
 - ➔ Applying electrostatic furnace powder paints for all parts of the canopy of silent diesel generator.
 - ➔ Modularity: Easy and complete assembly and de-assembly of diesel generator's canopy for minor and major repairs.
 - ➔ Devising safety lock onto the silent canopy doors to restrict access to and increase safety of the diesel generator.
 - ➔ Creating a bend on the airway to break the noise inside of the canopy and preventing the outgoing sound of the diesel engine.
 - ➔ Installing the glass window to view the operating condition of diesel generator without having to open the silent canopy doors.
 - ➔ Use of ovoid shoulder fireproof sonic and thermal insulators with higher coefficient of noise absorption in the internal surface of canopy.
- For any further information about silent canopies regarding the dimensions and any other specifications, please do not hesitate to contact us. We are at your disposal to reply.





DSE Controller

The design and production of this product is performed in the UK. The modules and ATS made by this company are of the most recognized and high-quality in the world.

- Wide range products of DSE are pertinent to diesel generators, ATS, and recharging the batteries
- Convenient operation is of the most compelling features of this product
- The boards of DSE in severe conditions as vibration, dust, water drip, sunlight, and heat have the best performance
- Quick and easy operation and installation are other features of this product
- Simple programming is the most distinctive characteristics of this product
- The legible screen with a uniform light make it function perfectly in dark areas
- Extensive programmability is of very useful capability of this controller
- The control of the engine main protection parameters is instantaneous



DSE 7320



DSE 4520



DSE 3110



→ DSE Controller Technical Data

Main Features		Panel Model			
		P 7320	P 6020	P 4520	P 3110
Operation	Controller Model	DSE 7320	DSE 6020	DSE 4520	DSE 3110
	Mode : Stop/Auto/Start	▪	▪	▪	▪
	Mode : Manual/Test	▪	▪	X	X
	Emergency Stop push-button	▪	▪	▪	▪
Genset Instrument	3 Phase Voltage UV,VW,WU	▪ LCD	▪ LCD	▪ LCD	▪ Meter
	Neutral NU,NV,NW	▪ LCD	▪ LCD	▪ LCD	▪ Meter
	3 Phase Current U,V,W	▪ LCD	▪ LCD	▪ LCD	▪ Meter
	Frequency	▪ LCD	▪ LCD	▪ LCD	▪ LCD
	KVA , KW , KVA _r , Power Factor COSφ	▪ LCD	▪ LCD	▪ LCD	X
	KWh , KVAh , Kvarh	▪ LCD	▪ LCD	▪ LCD	X
	Phase Sequence	▪ LCD	X	X	X
Mains Instrument	3 Phase Voltage L1L2,L2L3,L1L3	▪ LCD	▪ LCD	▪ LCD	X
	Neutral NL1,NL2,NL3	▪ LCD	▪ LCD	▪ LCD	X
	Frequency	▪ LCD	▪ LCD	▪ LCD	X
Engine Instrument	Oil pressure	▪ LCD	▪ LCD	▪ LCD	▪ Meter
	Coolant temperature	▪ LCD	▪ LCD	▪ LCD	▪ Meter
	Run Time	▪ LCD	▪ LCD	▪ LCD	▪ LCD
	Speed in RPM	▪ LCD	▪ LCD	▪ LCD	▪ LCD
	Battery Voltage	▪ LCD	▪ LCD	▪ LCD	▪ LCD
	Engine Maintenance due	▪ LCD		▪ LCD	X
Engine Shut Down Protection	Low Oil Pressure	▪ LCD	▪ LCD	▪ LCD	▪ LED
	High Engine Temperature	▪ LCD	▪ LCD	▪ LCD	▪ LED
	Under / Over Speed	▪ LCD	▪ LCD	▪ LCD	▪ LED
	Fail to start	▪ LCD	▪ LCD	▪ LCD	▪ LED
	Stop failure	▪ LCD	▪ LCD	▪ LCD	▪ LED
	Emergency Stop	▪ LCD	▪ LCD	▪ LCD	▪ LED
Alternator Shut Down Protection	Under / Over Volt	▪ LCD	▪ LCD	▪ LCD	N-U
	Under / Over Frequency	▪ LCD	▪ LCD	▪ LCD	▪ LCD
	Over Current	▪ LCD	▪ LCD	▪ LCD	X
Mains Failure	Under / Over Volt	▪	▪	▪	X
	Under / Over Frequency	▪	▪	▪	X
	Out of limit	▪	▪	▪	X
Auto	ATS Change Over Control	▪	▪	▪	X
	Remote Start	▪	▪	▪	▪
Miscellaneous	Battery Charger	▪	▪	▪	▪
	Water Heater Control	▪	▪	▪	▪
	Alarm buzzer	▪	▪	X	X
	DC Outputs	6	4	4	1
	Configurable Inputs	8	6	4	4
	RS 232 communication	▪	X	X	X
	RS 485 communication	▪	X	X	X
	USB Port	▪	▪	▪	▪

▪ Standard ▪ Optional X Not Available

Proven Reliability and Durability in Extreme Conditions

As oil and gas become more difficult to recover and companies attempt to extract more from existing wells, investment in power generation will continue to increase. Additionally, diesel power generators provide backup power to these companies' main facilities and operations. If there is an emergency or disaster and the main power is shut down, generators can assist with backup, allowing business to continue as usual. This can save the industry a huge amount of lost time and money. That is why power generators are key to the oil and gas industry. In fact, they are part of the backbone, that keeps them running. All major oil and gas companies rely on generators extensively. Hence it is important to choose heavy duty, reliable generators that can give your facilities and equipment, the power they need to run smoothly and without any interruption.

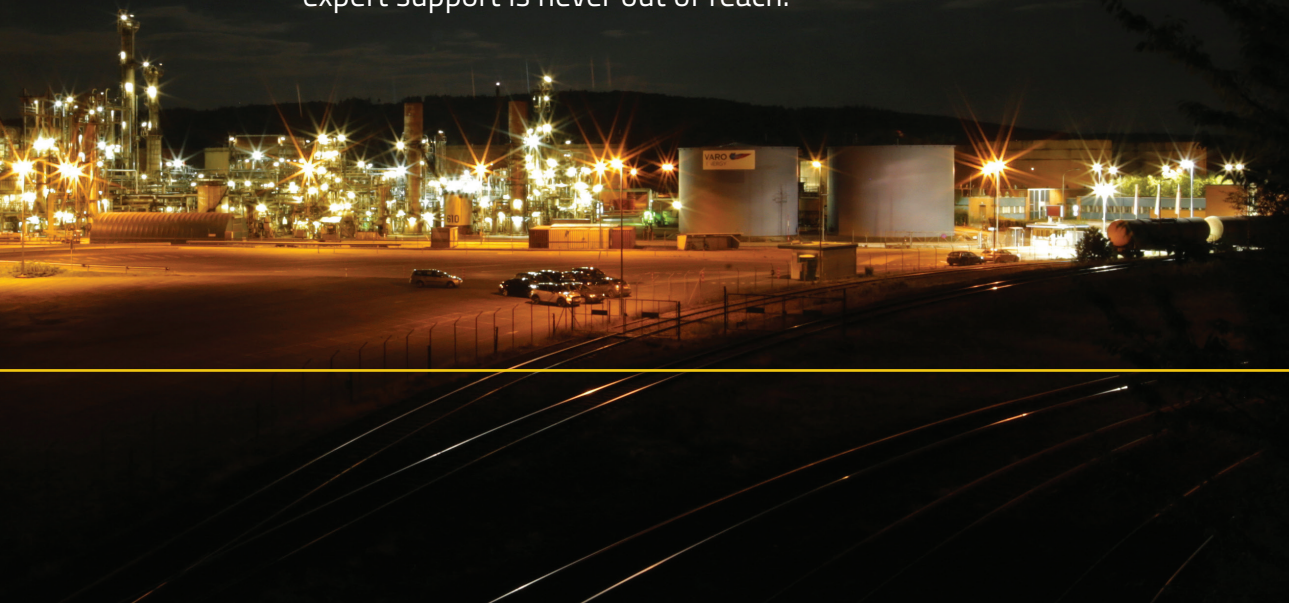
Why? Because the power generation is essential to the petroleum industry and every minute of downtime costs money. In this regard, Rabin Energy Pazh company, meets your power demands with its commitment to deliver products designed to provide our oil and gas customers with the highest levels of reliability, durability, performance and dependability at the lowest cost of operation. The diesel generators we provide are engineered and built with the capabilities needed to sustain your operation under the harshest and most extreme conditions. With the strength of Rabin Energy Pazh at your side, your oil and gas initiatives can go further, with increased uptime and greater productivity.

Ranging in prime power ratings from 25 kVA to 500 kVA, these gensets are built to run under load 365/7/24 when maintained according to recommendations. Each also comes preconfigured with an array of built-ins, including a power distribution panel and a best-in-class controller, conveying superb performance as a stand alone unit or as part of a parallel system for added operating flexibility. Most importantly, our presence and support everywhere you need us, make Rabin Energy a proven, committed oil and gas partner you can always depend on.





And we know how to power it. On your offshore rig or on your onshore plant, you're at the mercy of a remote location, tough conditions, and the even tougher petroleum industry. But power is one thing you won't have to worry about. We are ready wherever and whenever you need us, so expert support is never out of reach.





Why Repair & Maintenance Services?

Any diesel generator set used for emergency or primary source of power, must have periodic service and maintenance performed. Setting up a planned repair and maintenance schedule, and performing all associated testing, will insure generator availability upon demand. Why? Because Possibilities of generator failure increase when repair & maintenance checks are not performed.

In this regard Rabin Energy Pazh has earned an outstanding reputation for providing -24hour service and on-location repair & maintenance services that efficiently solve problems and get its customers' operations back up and running as quickly as possible. So If anything ever happens to the diesel generators or spare parts we supplied, or if you need assistance during installation process, we can send one of our local technicians to you. Hence our clients can be sure that we are dedicated to providing excellent customer support and repair & maintenance services with a focus on upholding the highest standards of quality. We will ensure your diesel generator is well maintained by providing the best quality services and keeping your costs down. That is what we call repair & maintenance services.

Why Aftersales Services?

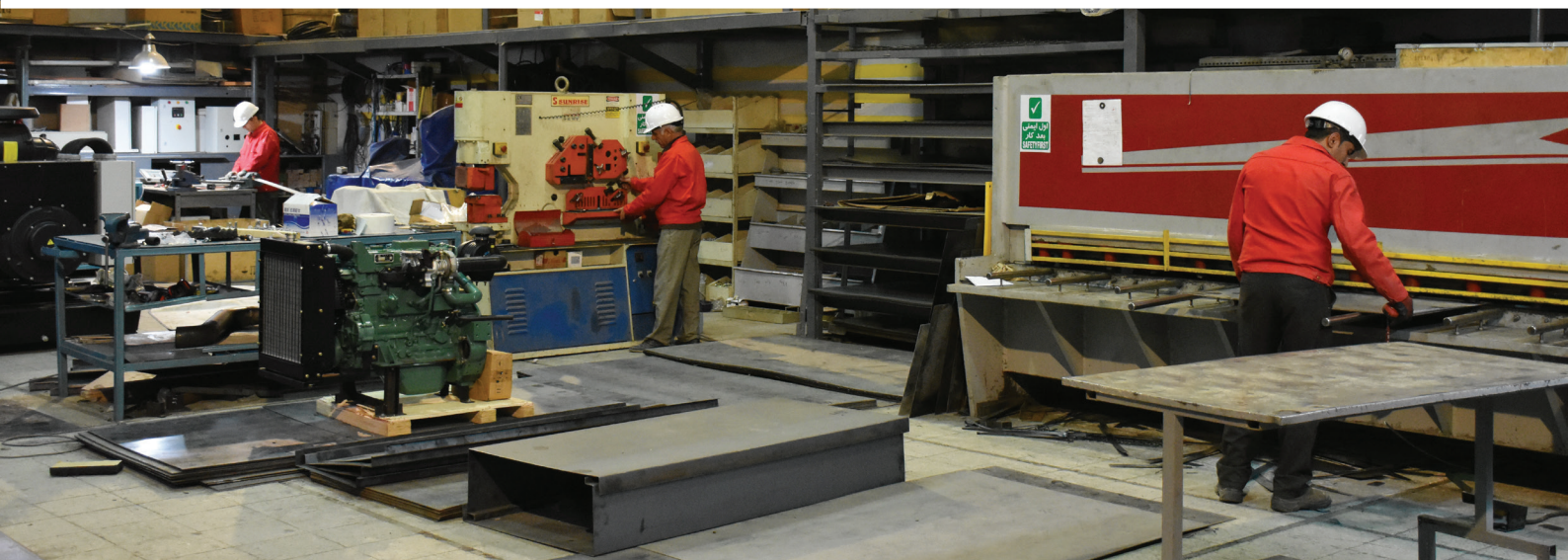
In the power generation industry even with regular preventative maintenance, components wear out over time and need replacement. That is why after sales service plays an important role in customer satisfaction and customer retention. It generates loyal customers for our company and makes our customers start believing in our brand and get associated with us for a longer duration. We believe if our customers be satisfied they speak highly about our organization and its products and eventually a satisfied and happy customer, brings more customers and finally more revenues for our organization.

In this regard, what distinguishes Rabin Energy Pazh company from our other competitors, is the flexible support we are able to provide to our customers in executing their projects, meeting international standards. Regardless of where their projects will take place, we guarantee that our customers get the service they need – whatever, wherever and whenever they need it. That is why we work closely with every customer to guarantee %100 satisfaction from start to finish. Why? because we believe customers are the assets of every business. So, if you're looking for a company that you can trust, you can be sure that Rabin Energy Pazh after sales policy, is transparent and in favor of its customers and we build enduring relationships with our clients by ensuring that their requirements are always met on time and are cost-efficient. Keep it in mind. We are not just a vendor; we are your business partner.





We have a team of specialist, capable of handling all major brands. Our team of diesel power specialists is able to work with you to design or specify diesel generator systems or solutions to ensure your continuity of electricity supply





You Can Count on Us


In today's technology-dependent world, energy is no longer a luxury but a necessity. That is why for so many of Iranian's big businesses and services, the power of our experience counts for so much. At Rabin Energy Pazh company, we aim to please customers by delivering the right solution for each individual. In fact, providing what the customers want is at the core of Rabin Energy's working philosophy.

Our success, we believe has been largely as a result of always wanting to exceed our customers' expectations; we do not always but we do try! The Rabin Energy Pazh brand is recognized in many companies around Iran and at its core it underlines and represents our values. An Iranian company proud of its roots and heritage, delivering first class diesel generators all over the country offering great service and value.

We pride ourselves in providing world class diesel generators and quality services to our customers and we are sure you will benefit from our experience. If a new client starts to work with our company, it understands very soon that our team is able to deliver a high level of different services to all clients. Please feel free to contact us if you would like to know more information about any of the services or products we provide.

You can also learn more about what we do, by visiting our website. On our website you will find many more information about our company. If you cannot find what you are looking for, please do not hesitate to contact us, we will do our best to assist you.





Our generators should
always be something
people are pleased with
and feel good about

We work closely with you to understand your challenges and requirements for parts, aftercare and maintenance, so we can significantly reduce your down-time – enabling you to maximize the return on your investment. Please remember that our reputation is based on trust and reliability – we will keep your engine running wherever you are in Iran.



Head Office: No.8 | Third Alley | 63th. St. Lashkari Highway | Tehran | Iran
Phone: +98 21 4498 0651 – 2 Fax: +98 21 4499 0616
Email: info@fawiran.com